

# INSTALLATION MANUAL

## MINI HALOGEN WORK LAMP



**Mini Halogen Work Lamp**  
FLOOD---MODEL # = CWL111FL  
SPOT-----MODEL # = CWL111SP  
6.0"High X 3.6"Wide X 3.4"Deep  
(1) 55 Watt H3 Halogen Lamp  
Operating Voltage : 12V

**NOTE: IT MAY BE NECESSARY TO CLIP TERMINALS OFF ENDS OF WIRES**

**PSE AMBER**  
from **CODE 3**

[www.code3pse.com](http://www.code3pse.com)

**Tech Support: (314) 996-2800**

### WIRING:

1. WIRE GAUGE: USE MINIMUM 14 GAUGE WIRE & CONNECTORS
2. CONNECT RED (+) WIRE TO POSITIVE OR POWER.  
CONNECT BLACK (-) WIRE TO NEGATIVE OR GROUND.
3. FUSE REQUIREMENTS: 10AMP FUSE.
4. WEATHER RESISTANT CONNECTORS RECOMMENDED.

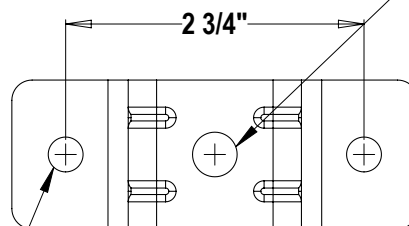


Adjustable 360 Degrees  
Horizontally

**HAT BRACKET**

### MOUNTING:

**TO MOUNT WITHOUT HAT BRACKET  
DRILL (1) 13/32" DIA HOLE  
AT DESIRED LOCATION.**



**TO MOUNT WITH HAT BRACKET  
DRILL (2) 21/64" DIA HOLES  
AT DESIRED LOCATION.**



Adjustable 180 Degrees  
Vertically

Code 3 is a registered trademark of Code 3, Inc.  
a subsidiary of Public Safety Equipment, Inc.

Code 3®, Inc.  
10986 N. Warson Road  
St. Louis, Missouri 63114-2029—USA  
Ph. (314) 426-2700 Fax (314) 426-1337

[www.code3pse.com](http://www.code3pse.com)

Revision 0, 09/11 - Instruction Book Part No. T15479  
©2011 Public Safety Equipment, Inc. Printed in USA