

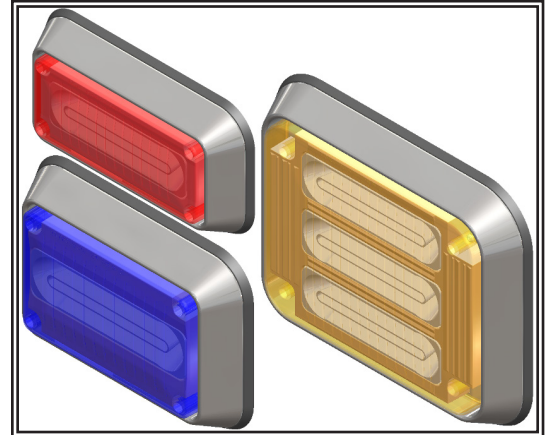


LED PriZm II Steady Burning Perimeter Lights

INSTALLATION & OPERATION MANUAL

The PriZm II Steady Burning Perimeter lights are offered in sizes 3x7, 4x6 and 7x9. Both single color and multi-color are available. Both single and multi-color lights have a solid signal all the way across the light. The outer lenses are field replaceable, and will provide a waterproof barrier via an interface with a field replaceable outer gasket. The units are surface-mounted, requiring no recesses to be cut in the vehicles for normal mounting. Only a hole for wiring and small holes for mounting screws will be required. The unit comes with an included bezel, and operates on 12 volts DC. Various light colors are available, and solid color lights are available in either colored or clear lenses. Refer to Table 3 for the available configurations.

These lights are steady burning **only**, and must be connected to a flasher, multiplexer, or other controller to provide flashing, dimming, synchronization, or other features. Additionally, multi-color lights must be used with a flasher or controller that limits the duty cycle (on time for either color) to a maximum of 50%. Using these lights in a continuous duty application or with controllers that violate these conditions will result in voiding their warranty. Please contact Code 3 if a flashing controller is required for these lights, or if flashing lights are required.



IMPORTANT! Read all instructions before installing and using. Installer: This manual must be delivered to the end user.

WARNING!
Failure to install or use this product according to manufacturer's recommendations may result in property damage, serious bodily/personal injury, and/or death to you and those you are seeking to protect!

Do not install and/or operate this safety product unless you have read and understand the safety information contained in this manual.

1. The use of this or any warning device does not insure that all drivers can or will observe or react to an emergency warning signal. Never take the right-of-way for granted. It is your responsibility to be sure you can proceed safely before entering an intersection, driving against traffic, responding at a high rate of speed, or walking on or around traffic lanes.
2. The effectiveness of this warning device is highly dependent upon correct mounting and wiring. Read and follow the manufacturer's instructions before installing or using this device. The vehicle operator should insure daily that all features of the device operate correctly. In use, the vehicle operator should insure the projection of the warning signal is not blocked by vehicle components (i.e. open trunks or compartment doors), people, vehicles, or other obstructions.
3. This equipment is intended for use by authorized personnel only. It is the user's responsibility to understand and obey all laws regarding emergency warning devices. The user should check all applicable city, state and federal laws and regulations.
4. Code 3, Inc., assumes no liability for any loss resulting from the use of this warning device. Proper installation is vital to the performance of this warning device and the safe operation of the emergency vehicle. It is important to recognize that the operator of the emergency vehicle is under psychological and physiological stress caused by the emergency situation. The warning device should be installed in such a manner as to: A) Not reduce the output performance of the system; B) Place the controls within convenient reach of the operator so that he/she can operate the system without losing eye contact with the roadway.
5. Emergency warning devices often require high electrical voltages and/or currents. Properly protect and use caution around live electrical connections. Grounding or shorting of electrical connections can cause high current arcing, which can cause personal injury and/or severe vehicle damage, including fire. Wait 10 minutes after turning off the power from system before touching any internal components.
6. Always wear hand and eye protection when handling electrical components.
7. PROPER INSTALLATION COMBINED WITH OPERATOR TRAINING IN THE PROPER USE OF EMERGENCY WARNING DEVICES IS ESSENTIAL TO INSURE THE SAFETY OF EMERGENCY PERSONNEL AND THE PUBLIC.

Specifications:

Table 1:

	3x7 Single Color	3x7 Multi-Color	4x6 Single Color	4x6 Multi-Color	7x9 Single Color	7x9 Multi-Color
Size	1.5" x 4.75" x 9.0" (w/ bezel)		1.5" x 6.0" x 8.5" (w/ bezel)		1.5" x 9.0" x 11.0" (w/ bezel)	
Weight	1.0 lbs		1.1 lbs		2.25 lbs	
Operating Voltage	11 - 15 Volts					
Average Current Draw ¹	0.8 Amps				2.5 Amps	
Peak Current Draw ²	1.7 Amps				5.1 Amps	

¹At 12.8V, 78°F, and using NFPA Quad Flash

²At 12.8V, 78°F, when powered continuously (NOTE: These lights are not designed to be powered continuously for more than a couple of seconds.)

Unpacking and Pre-Installation:

Carefully remove the light head from its protective packaging. Inspect the unit for transit damage. Report any damage to the carrier and keep the shipping carton. Verify the contents of the package (refer to Table 3 and Figures 2 and 3). Test the lights before installation. To test, touch the black wire(s) to ground and the red wire to +12 VDC. On multi-color lights, verify the secondary color by removing the red wire and touching the white wire to +12 VDC.

If a problem occurs, contact the factory.

Installation and Mounting:

1. Mark off and drill four 1/4" diameter mounting holes and the 1" wire hole on the vehicles mounting surface using the dimensions shown for the appropriate light (refer to Figures 4, 5 & 6). Verify free clearance exists behind the mounting surface for wires and fasteners before drilling.
2. Install customer supplied grommet in the 1" diameter wire hole. Install the four plastic grommets in the mounting holes (Code 3 supplied).
3. Route the vehicle power wires and allow a minimum of 3" of slack to protrude from the center opening at each light head location. Use appropriate gauge wiring based on the wire length and the light current draw as listed in the specifications above.
4. Prepare the vehicle power wires and the light heads wires with terminations of the customer's choice (not supplied) as follows: Red: +12 VDC Primary, White: +12 VDC Secondary (for multi-color lights), Black: Ground (multi-color 7x9 lights will have two Black wires; both should be connected to ground). Waterproof connectors are recommended. Refer to Figure 1 and Figure 2.
5. Route the power wires through the center opening of the light gasket or bezel and bezel gasket (refer to Figure 3). Connect the light heads power wires (black and red) to the vehicle system's ground and positive (+12 VDC), respectively. Seal or cap the end of the white wire and other unused wires to prevent inadvertent changes to the flash pattern or unexpected operation of the device.
6. Verify proper light head operation by supplying electrical power to the system wires.
7. Push the assembled electrical connectors through the center opening and into the vehicle.
8. Install the lens gasket over the light head.
9. Place the light head onto the light gasket or bezel and bezel gasket. The bezel and all gaskets are marked with the word "Top", and orientation is important. The light head is not marked, but should ideally be oriented such that the wire harness is located directly across from the hole in the vehicle body; these light heads are all symmetric left and right, so orientation is not important.
10. Install onto the light head the outer lens and secure to the vehicle using the four supplied #6 x 1 1/4" screws.

Figure 1 - Wiring for Single Color Lights:

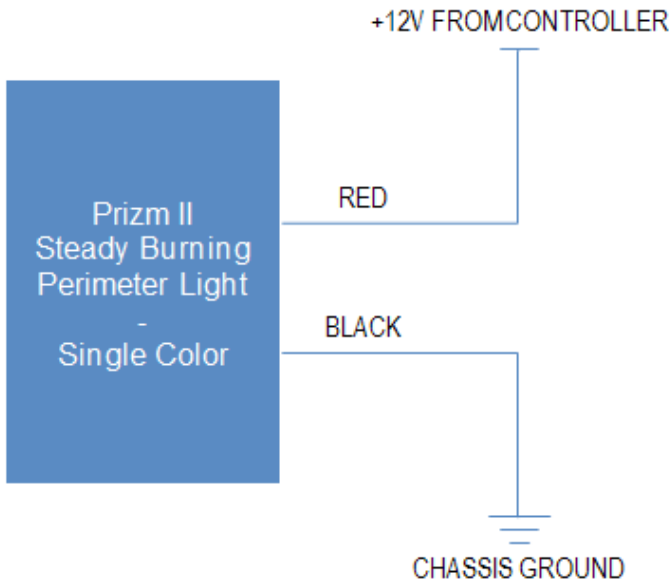
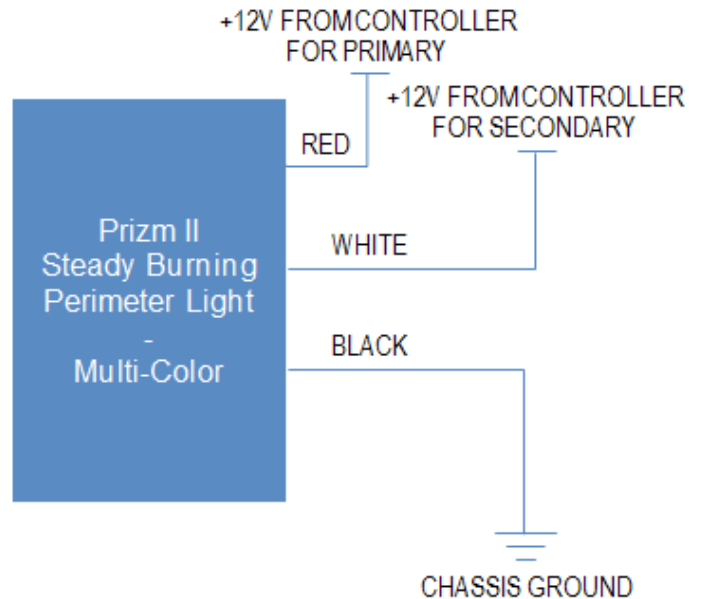


Figure 2 - Wiring for Multi-Color Lights:



Parts & Exploded View:

The table below references the components identified in Figures 3 & 4 below.

Table 2:

Size	Lens Color	1: Light Housing	2: Outer Lens	3: Lens Gasket	4: Light Gasket	5: Parts Kit	6: Bezel	7: Bezel Gasket	8: Base Gasket
3x7	Red	T52011	T52112	T52007	T07919	T52027	T07916	T07922	T52004
	Amber		T52113						
	Blue		T52114						
	Clear		T52115						
4x6	Red	T52012	T52116	T52008	T07920		T07917	T07923	T52005
	Amber		T52117						
	Blue		T52118						
	Clear		T52119						
7x9	Red	T52013	T52120	T52009	T07921		T07918	T07924	T52006
	Amber		T52121						
	Blue		T52122						
	Clear		T52123						

Figure 3 - Exploded View (3x7 w/ Bezel Shown):

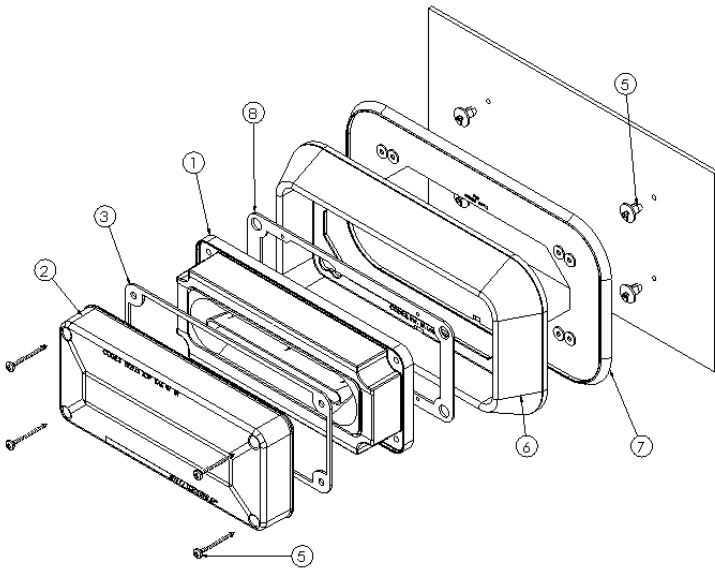
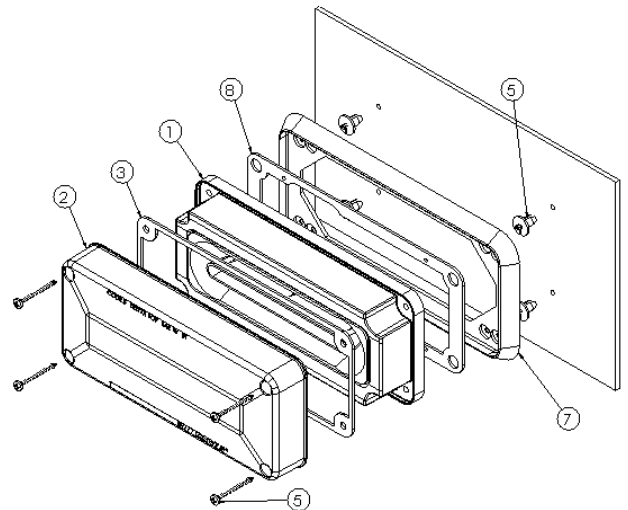


Figure 4 - Exploded View (3x7 Shown):



Installation Template Dimensions:

Figure 5 - 3x7 Mounting Template:

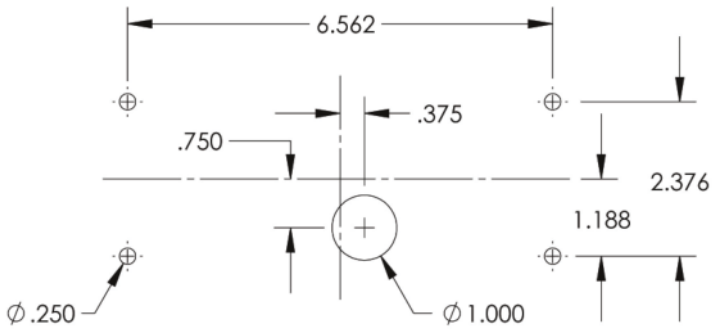


Figure 6 - 4x6 Mounting Template:

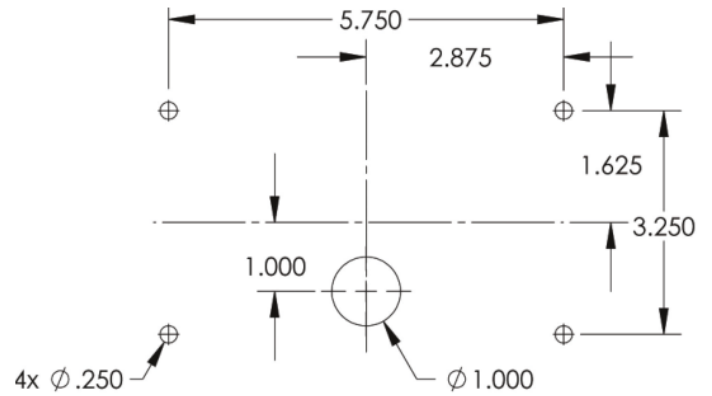
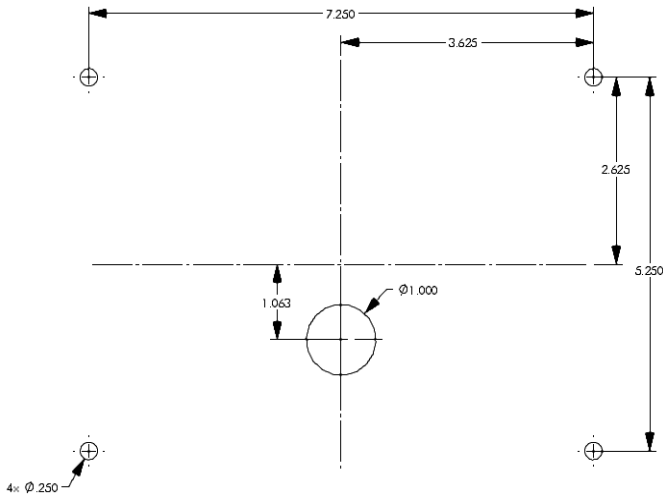


Figure 7 - 7x9 Mounting Template:



Maintenance:

The lens is field removable for cleaning and replacement. Remove the lens by unscrewing the four mounting screws. Use mild detergent, warm water and a soft cloth to clean both surfaces of the lens. Use of any other chemicals may void product warranty. Dry thoroughly before reinstalling.

Manufacturer Limited Warranty and Limitation of Liability:

This warranty policy is intended to provide the best possible service experience for our customers. This warranty policy identifies the duration, exclusions, and specific coverage's for each product and the instruction for requesting return authorization. Code 3 and PSE Amber ("Seller") gives this limited warranty to the original purchaser from a distributor ("Buyer") for Code 3, Inc. & PSE Amber's product provided the product is installed and operated in accordance with manufacturer's recommendations. This limited warranty shall not be extended or varied except by a written instrument signed by Seller and Buyer. This limited warranty is for the benefit of the Buyer only and is not transferable.

Steps for Warranty Claims

1. **Review this entire warranty policy to verify that the product meets all applicable requirements for a warranty claim to ensure proper processing.**
2. **Contact the Code 3, Inc. Technical Service Department via telephone (314-996-2800) or email (technicalsupport@code3pse.com) to request a Returned Material Authorization (RMA) number.**
 - (a) Please be prepared to specify customer account number, contact name, contact phone number, product part/model numbers, product descriptions, quantities, all applicable date codes/serial numbers and description(s) of the nonconformance(s). (b) Do not accumulate product for a period of longer than 30 days prior to requesting the RMA and returning the claims to Seller for processing. Long accumulations of product will delay warranty processing and affect warranty analysis preventing timely action for quality deficiencies. Accumulations of product exceeding 90 days will not be processed. (c) Product may need to be returned for service to occur, including replacement or credit.
3. A Code 3 representative will determine if the product must be returned for analysis and/or repair. If the product requires return for warranty service please continue with the following steps 4 and 5.
4. **Package the product to be returned to prevent any shipping damage.**
 - (a) Deliver the product freight prepaid. (b) Only ship the product that has been authorized per the RMA. (c) Identify the RMA# on the package(s) in BOLD marker next to the product label (if the package does not provide room to hand write the RMA number, then print the number on the shipping label itself). (d) Returned packages that do not properly display the RMA number will delay warranty processing. (e) Any product returned that was not included on the RMA will not be processed through warranty. (f) Credit/replacement will not be granted for product that has not been returned per the RMA.
5. **Ship the product to the following address:**

Code 3, Inc.
Attention: Technical Service Department
10986 N. Warson Road
St. Louis, MO 63114-2029
6. **Once the returned warranty claims are received at Code 3, Inc. Technical Service Department, the product will be analyzed and repaired or replaced per the discretion of the service repair technician.**
 - (a) The returned product must fall within the specified warranty time period to be repaired/replaced at no cost to the customer. (b) The warranty time period begins at the date of purchase (this start date will begin no later than 12 months from date of manufacture). (c) For returned product that do not meet warranty requirements, a service technician will contact the sender to quote the repair/replacement or to return the product in "as received" condition. (d) Credit will be issued in cases when the product cannot be repaired or replaced.
7. **The repaired/replaced product will be packaged and shipped back to the customer location at cost to Code 3, Inc.**

These steps are required for all warranty claims. Please contact the Technical Service Department with any questions regarding the claim process.

Product warranty durations are available for review on Code 3's website www.code3pse.com.

Use of lamp or other electrical load of wattage higher than installed or recommended by the factory, or use of inappropriate or inadequate wiring or circuit protection causes this warranty to become void. Failure or destruction of the product resulting from abuse or unusual use and/or accidents is not covered by this warranty. Sealed product that shows evidence of broken or tampered seals will cause this warranty to become void.

For out of warranty service, please contact the Technical Service Department (314-996-2800 or technicalsupport@code3pse.com) for quotes and return authorization information.

*Seller reserves the right to repair or replace product at its discretion. Seller assumes no responsibility or liability for expenses incurred for the removal and/or reinstallation of products requiring service and/or repair. Seller assumes no liability for expenses incurred in the packaging, handling, and shipping of the product to the factory service department for repair/service. **The remedies provided herein are Buyer's sole and exclusive remedies, whether for claims under and express or any implied warranty, breach of either, tort or otherwise. In no event shall Seller be liable for any special, indirect, incidental or consequential damages arising out of the breach of this warranty or the purchase, installation, ownership or use of Seller's products, nor shall Seller be responsible for representations, warranties or agreements made by any employee, agent or other person that purport to modify or add to any of Seller's obligations under this document. Except as set forth in this limited warranty, Seller makes no other express or implied warranties whatsoever, including, without limitation, warranties of fitness for a particular purpose or merchantability, with respect to the product.**

**Seller reserves the right to update the warranty statements, processes and policies. This policy, effective 01/01/2015, supersedes previous versions.


10986 North Warson Road
St. Louis, MO 63114
Technical Service:
(314) 996-2800
cs-c3@code3esg.com
www.code3esg.com

A Division of ESG | www.eccogroup.com