

FOR THE FOLLOWING PURSUIT VEHICLES

**2011 - PRESENT: DODGE CHARGER, CHEVY CAPRICE,
FORD PI SEDAN, FORD PI UTILITY**

2005 - 2010: DODGE CHARGER

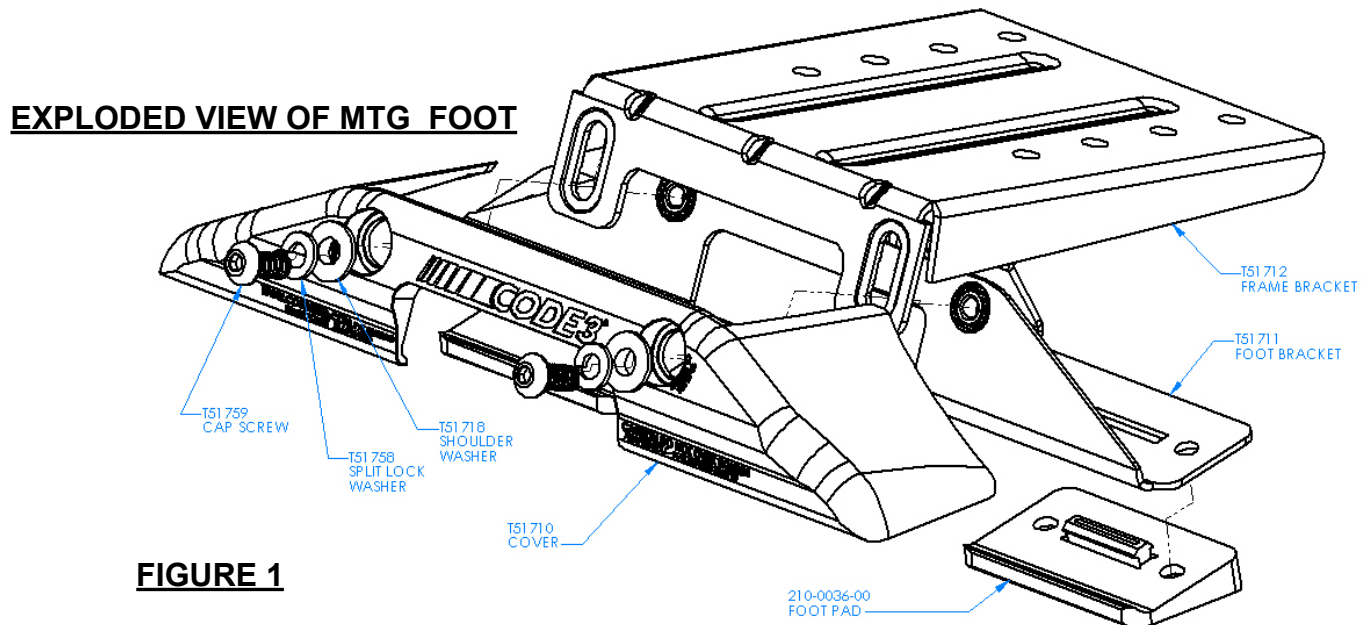
2005 - PRESENT: CHEVY IMPALA

2015 - PRESENT: CHEVY TAHOE

MAY FIT OLDER VEHICLES - CALL FACTORY FOR DETAILS

INSTRUCTIONS FOR NEW LIGHTBAR INSTALLATIONS:

1. Review the mounting kit components and assembly in Figure 1. The kit should also include a bag of fasteners to attach the mounting feet to the lightbar frame. The lightbar hold-down brackets and fasteners designed specifically for the vehicle will be in a separate package.



2. First install the foot pads 210-0036-00 to the foot brackets T51711 as shown above in Figure 1. Note the thicker side of the pad should be to the center of the vehicle to match the curvature of the roof.

3. Attach and center the mounting feet on the light bar. Be sure the outer edges of the mounting feet are located at the correct distance apart for the vehicle as shown in the chart in Figure 2 below. Use all (8) of the 5/16-18 carriage bolts, nuts, and lock washers whenever possible (Note: Some light bar lengths will only allow (2) bolts on each side (4) total). Make sure all of the 5/16-18 nuts and lock washers are tightened securely until the nuts are tight and the lock washers are fully flattened.

IMPORTANT! Read all instructions before installing and using. Installer: This manual must be delivered to the end user.



Vehicle	Light Bar Length	Mtg Foot - "A" Dimension
Caprice - 2011 To Present	47"	45.25"
PI Utility - 2011 To Present	47" & 52"	47.00"
PI Sedan - 2011 To Present	47"	44.00"
Charger - 2011 To Present	47"	45.25"
Charger - 2005 To 2010	47"	44.25"
Tahoe - 2015 To Present	47" & 52"	48.25"
Impala - 2005 To Present	47"	45.25"

FIGURE 2

4. Position the light bar onto roof of vehicle in the position desired. The lightbar is generally centered over the "B" Pillar of the vehicle except on civilian versions of the Tahoe with a roof rack. See Figure 3.

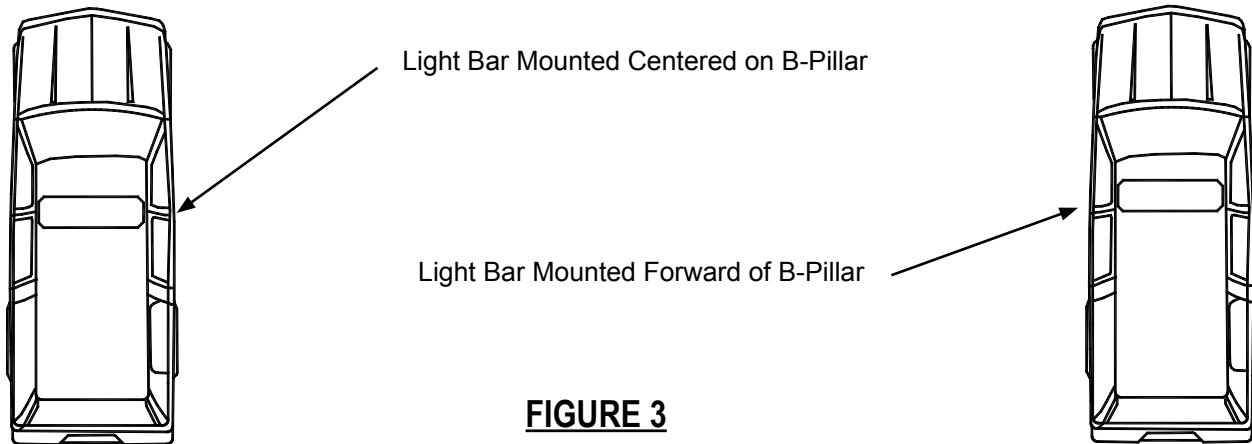


FIGURE 3

5. Adjust the mounting feet to level the lightbar. Loosen the button head cap screws on the sides of the mounting feet and tilt the lightbar until level. Retighten the screws to 180 inch*pounds (15 foot*pounds or 20.3 Newton*Meters). See Figure 4.

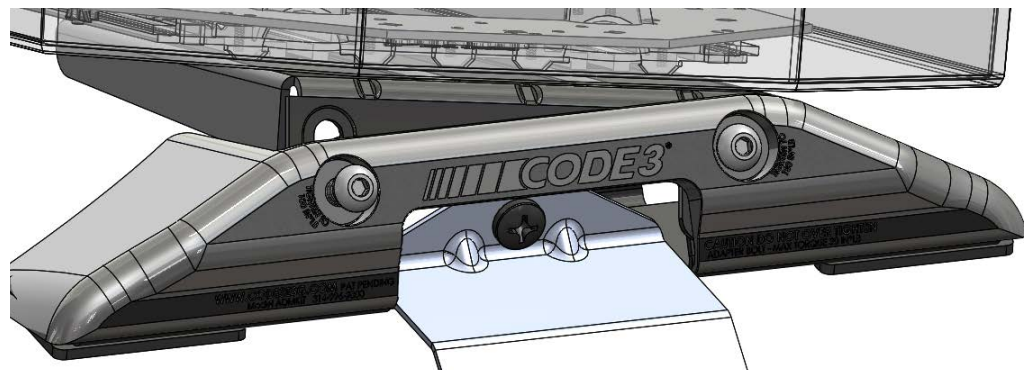


FIGURE 4

Mtg kit with cap screw loosened when making angular adjustment

6. Carefully position the driver side and passenger side lightbar hold-down brackets onto roof of the vehicle with the mounting flanges centered in the opening of the mounting feet and mark the screw installation points on the vehicle door frame areas.

Note: For some vehicle applications, protective pads are provided with the hold-down brackets. To install (on the inside surface of the hold-down bracket), remove the paper backing to expose the adhesive. Then center the pad on the bracket with the edge against the bottom flange and press against as shown in Figure 5.

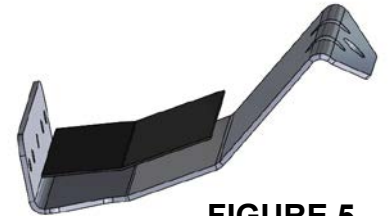


FIGURE 5

7. Fasten the brackets to the vehicle using all the screws provided. See Figure 6 for section view of assembly.

NOTE: The "A" point screws provided can sometimes penetrate the thin door frame sheet metal with their sharp points without prepunching a starting hole. If not, installers use a sharpened hole punch or scratch awl to punch the screw holes. Either method when done properly provides greater holding power for the screw threads than drilling holes. However, caution should be used to not punch or drill the holes oversize or the screws could strip out.

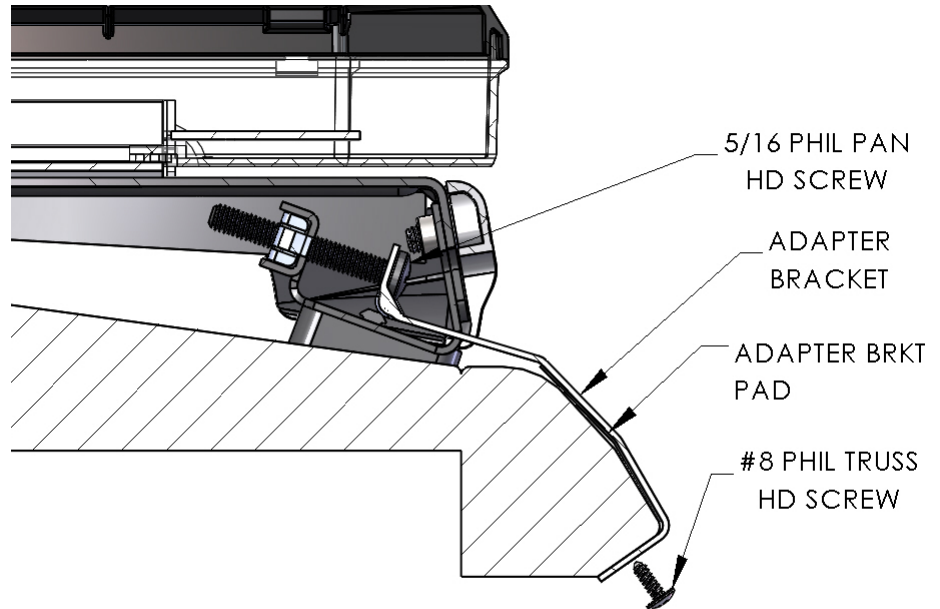


FIGURE 6

**SECTION VIEW OF MTG KIT
ON VEHICLE ROOF**

8. Thread a 5/16" - 18 X 2 1/4" long Phillips pan head SS mounting bolt through mounting bracket and into the cage nut on each mounting foot. In some instances you may need to push the end of the bracket up or down slightly to better align the bolt hole during the installation.

9. Tighten the bolts alternately between the driver side and the passenger side of vehicle until the lightbar is securely held where the center of the lightbar is aligned with the center of the roof line. Using a torque wrench calibrated in Inch*Pounds (or technically Pound Force * Inches), alternately tighten the bolt on each side of the light bar to 30 Inch*Pounds (or 3.4 Newton*Meters). Repeat the process until both bolts are at the same specified torque.

NOTE: This may take a couple of repetitions! Do not over tighten the bolts. If the angle of the lightbar must be readjusted, loosen these mounting bolts first then loosen the cap screws. Retighten the cap screws to 180 inch*pounds then retighten the mounting bolts to 30 inch*pounds.

WARNING: After ANY extreme extended high speed events the torque of these fasteners should be checked to be sure that the fasteners have not loosened up.

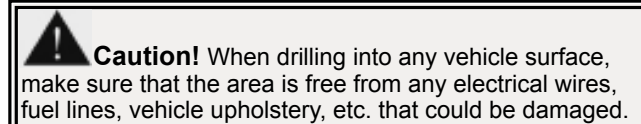
INSTRUCTIONS FOR PERMANENT MOUNT INSTALLATIONS:

The holes in the foot brackets T51711 are provided to assist when permanently installing the mounting feet directly to the roof of the vehicle.

1. You must first disassemble the mounting foot (remove the cap screws) to remove the outer cover then reassemble and attach to the lightbar.

2. Place the lightbar on the vehicle and mark the holes that will attach the mounting feet. The holes in the mounting foot are sized for 1/4" hardware but can be drilled for larger sizes. See Figure 7.

3. Drill the mounting holes being careful to not damage anything behind the roof area.



4. Install the lightbar and mounting kit to the vehicle leaving the roof attachment hardware loose.
5. Reinstall the covers to the mounting feet and tighten the cap screws to 180 inch*pounds then tighten the roof attachment hardware. The covers are flexible to allow an open end wrench to hold the fastener while an assistant tightens the corresponding nut on the inside of the vehicle.

Note: A separate kit (ADM-PERM) is available from the factory to permanently attach the mounting kit using externally mounted brackets and hardware.

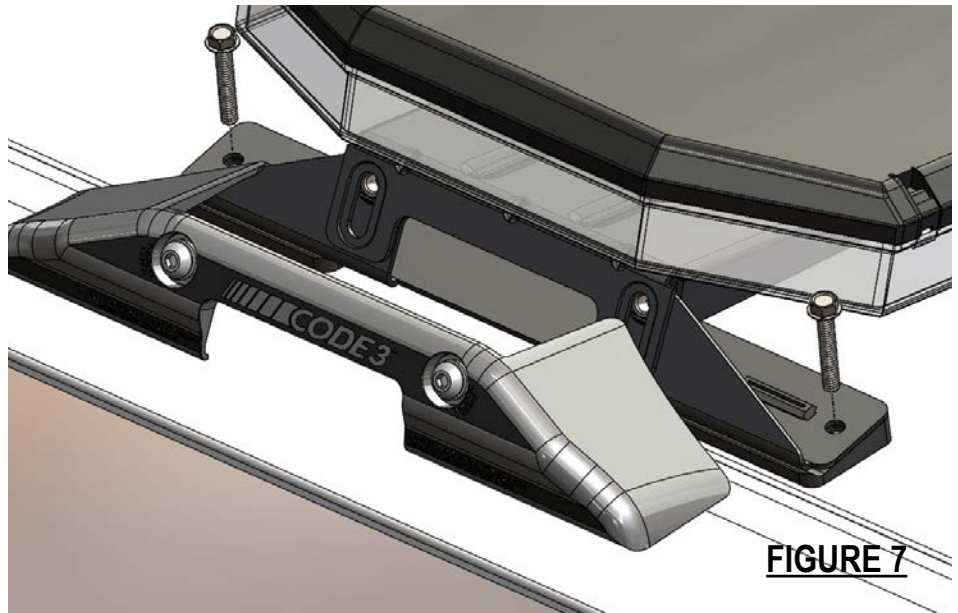


FIGURE 7

Manufacturer Limited Warranty Policy:

Manufacturer warrants that on the date of purchase this product will conform to Manufacturer's specifications for this product (which are available from the Manufacturer upon request). This Limited Warranty extends for Sixty (60) months from the date of purchase.

DAMAGE TO PARTS OR PRODUCTS RESULTING FROM TAMPERING, ACCIDENT, ABUSE, MISUSE, NEGLIGENCE, UNAPPROVED MODIFICATIONS, FIRE OR OTHER HAZARD; IMPROPER INSTALLATION OR OPERATION; OR NOT BEING MAINTAINED IN ACCORDANCE WITH THE MAINTENANCE PROCEDURES SET FORTH IN MANUFACTURER'S INSTALLATION AND OPERATING INSTRUCTIONS VOIDS THIS LIMITED WARRANTY.

Exclusion of Other Warranties:

MANUFACTURER MAKES NO OTHER WARRANTIES, EXPRESS OR IMPLIED. THE IMPLIED WARRANTIES FOR MERCHANTABILITY, QUALITY OR FITNESS FOR A PARTICULAR PURPOSE, OR ARISING FROM A COURSE OF DEALING, USAGE OR TRADE PRACTICE ARE HEREBY EXCLUDED AND SHALL NOT APPLY TO THE PRODUCT AND ARE HEREBY DISCLAIMED, EXCEPT TO THE EXTENT PROHIBITED BY APPLICABLE LAW. ORAL STATEMENTS OR REPRESENTATIONS ABOUT THE PRODUCT DO NOT CONSTITUTE WARRANTIES.

Remedies and Limitation of Liability:

MANUFACTURER'S SOLE LIABILITY AND BUYER'S EXCLUSIVE REMEDY IN CONTRACT, TORT (INCLUDING NEGLIGENCE), OR UNDER ANY OTHER THEORY AGAINST MANUFACTURER REGARDING THE PRODUCT AND ITS USE SHALL BE, AT MANUFACTURER'S DISCRETION, THE REPLACEMENT OR REPAIR OF THE PRODUCT, OR THE REFUND OF THE PURCHASE PRICE PAID BY BUYER FOR NON-CONFORMING PRODUCT. IN NO EVENT SHALL MANUFACTURER'S LIABILITY ARISING OUT OF THIS LIMITED WARRANTY OR ANY OTHER CLAIM RELATED TO THE MANUFACTURER'S PRODUCTS EXCEED THE AMOUNT PAID FOR THE PRODUCT BY BUYER AT THE TIME OF THE ORIGINAL PURCHASE. IN NO EVENT SHALL MANUFACTURER BE LIABLE FOR LOST PROFITS, THE COST OF SUBSTITUTE EQUIPMENT OR LABOR, PROPERTY DAMAGE, OR OTHER SPECIAL, CONSEQUENTIAL, OR INCIDENTAL DAMAGES BASED UPON ANY CLAIM FOR BREACH OF CONTRACT, IMPROPER INSTALLATION, NEGLIGENCE, OR OTHER CLAIM, EVEN IF MANUFACTURER OR A MANUFACTURER'S REPRESENTATIVE HAS BEEN ADVISED OF THE POSSIBILITY OF SUCH DAMAGES. MANUFACTURER SHALL HAVE NO FURTHER OBLIGATION OR LIABILITY WITH RESPECT TO THE PRODUCT OR ITS SALE, OPERATION AND USE, AND MANUFACTURER NEITHER ASSUMES NOR AUTHORIZES THE ASSUMPTION OF ANY OTHER OBLIGATION OR LIABILITY IN CONNECTION WITH SUCH PRODUCT.

This Limited Warranty defines specific legal rights. You may have other legal rights which vary from jurisdiction to jurisdiction. Some jurisdictions do not allow the exclusion or limitation of incidental or consequential damages.



10986 North Warson Road
St. Louis, MO 63114

Technical Service:
(314) 996-2800

c3_tech_support@code3esg.com
www.code3esg.com

A Division of ESG | www.eccogroup.com