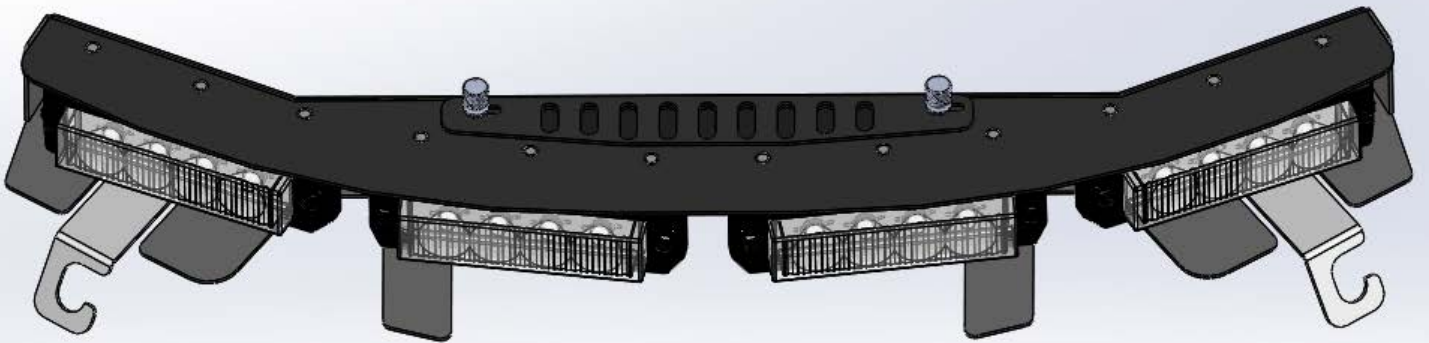




Installation and Operation Manual
SuperVisor 2014+
Harley Davidson Electra Glide



XT3 LIGHT HEAD VERSION



XT4 LIGHT HEAD VERSION

CONTENTS:

Installation & Specifications.....	2
SuperVisor Vent Operation.....	3
Wiring Connections & Vent Operation.....	3
LED Flash Pattern Selection	4
Exploded Views, Parts & Hardware List.....	5
Notes:.....	6-7
Warranty	8

IMPORTANT:

Read all instructions and warnings before installing and using.

INSTALLER:

This manual must be delivered to the end user of this equipment.

Specifications:

Overall Size Dimensions:---2.25" X 4.5" X 20.00"

Light Head Specs-----	4EA XT4	6EA XT3
Input Voltage-----	12VDC	12VDC
Peak Input Current-----	2 Amps	3 Amps
Flash Patterns-----	25	12
Fuse (customer supplied)-----	3A	5A

Available Light Head Colors:

XT4 Multi Color Light Heads-----Red / Blue---Red / White---Blue / White

XT3 Single Color Light Heads-----Red-----White-----Blue

Installation:

1. Loosen two outboard windshield screws from the faring on the bike.
2. Loosen the center windshield screw from the faring on the bike.
3. Install two mounting brackets onto the outboard faring screws (See FIGURE - 1).
4. If the Harley Davidson Motorcycle you are installing the SuperVisor on has the Dash-Mounted Air Vent Option, make sure the Cycle's Vent is in the open position before installing the Code 3 Supervisor (See FIGURE - 2). Place the Supervisor unit over the loose brackets (See FIGURE - 3 Under Side View of SuperVisor Assembly for clarification of how the brackets should orient with the SuperVisor).
5. Feed the (2) 6-32 Screws and internal tooth star washers through the appropriate holes in the back of SuperVisor and thread into the bracket (leave the screws loose).
6. Retighten the (3) windshield screws to tighten the faring and SuperVisor Mounting Brackets.
7. Tighten the (2) 6-32 screws to tighten the SuperVisor up against the windshield.

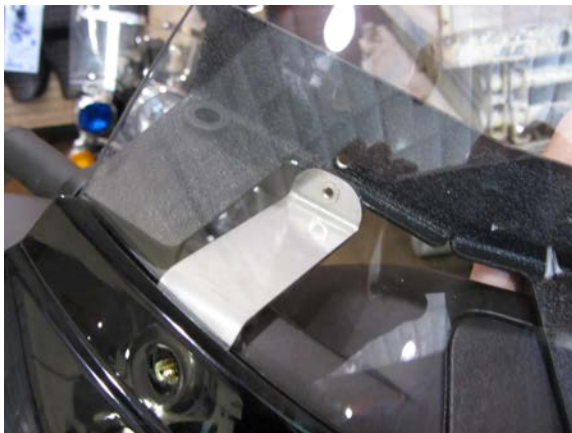


FIGURE - 1

The Dash Mounted Air Vent is Closed when the Vent Switch is positioned as shown! To Open the Vent, Push the Switch Down so it is flush with the top of the console before installing the Super-Visor!



FIGURE - 2



FIGURE - 3

OPERATING SLIDE VENT - NEW FOR 2014-15 MODEL YEAR BIKES WITH VENTED FAIRING.

Operating the Vent:

1. To close the Supervisor vent, loosen the two thumb-wheel fasteners slightly.
2. Slide the Supervisor vent to the closed position.
3. Tighten the two thumb-wheel fasteners.
4. Reverse procedure to move the Supervisor vent from the closed to the open position.



VENT IN OPEN POSITION



VENT IN CLOSED POSITION

Wire Connection:

1. Connect red & white wire to 12V power supply.
2. Connect black wire to ground.
3. Factory Default Flash pattern is A1&A2 – Five Flash. To change light head flash pattern apply and remove ground to blue wire prior to installation.



Larger wires and tight connections will provide longer service life for components. For high current wires it is highly recommended that terminal blocks or soldered connections be used with shrink tubing to protect the connections. Do not use insulation displacement connectors (e.g. 3M® Scotchlock type connectors). Route wiring using grommets and sealant when passing through compartment walls. Minimize the number of splices to reduce voltage drop. High ambient temperatures (e.g. underhood) will significantly reduce the current carrying capacity of wires, fuses, and circuit breakers. Use "SXL" type wire in engine compartment. All wiring should conform to the minimum wire size and other recommendations of the manufacturer and be protected from moving parts and hot surfaces. Looms, grommets, cable ties, and similar installation hardware should be used to anchor and protect all wiring. Fuses or circuit breakers should be located as close to the power takeoff points as possible and properly sized to protect the wiring and devices. Particular attention should be paid to the location and method of making electrical connections and splices to protect these points from corrosion and loss of conductivity. Ground terminations should only be made to substantial chassis components, preferably directly to the vehicle battery. The user should install a fuse sized to approximately 125% of the maximum Amp capacity in the supply line to protect against short circuits. For example, a 30 Amp fuse should carry a maximum of 24 Amps. **DO NOT USE 1/4" DIAMETER GLASS FUSES AS THEY ARE NOT SUITABLE FOR CONTINUOUS DUTY IN SIZES ABOVE 15 AMPS.** Circuit breakers are very sensitive to high temperatures and will "false trip" when mounted in hot environments or operated close to their capacity.

WARNING!



This Product contains high intensity LED devices. To prevent eye damage, DO NOT stare into light beam at close range.

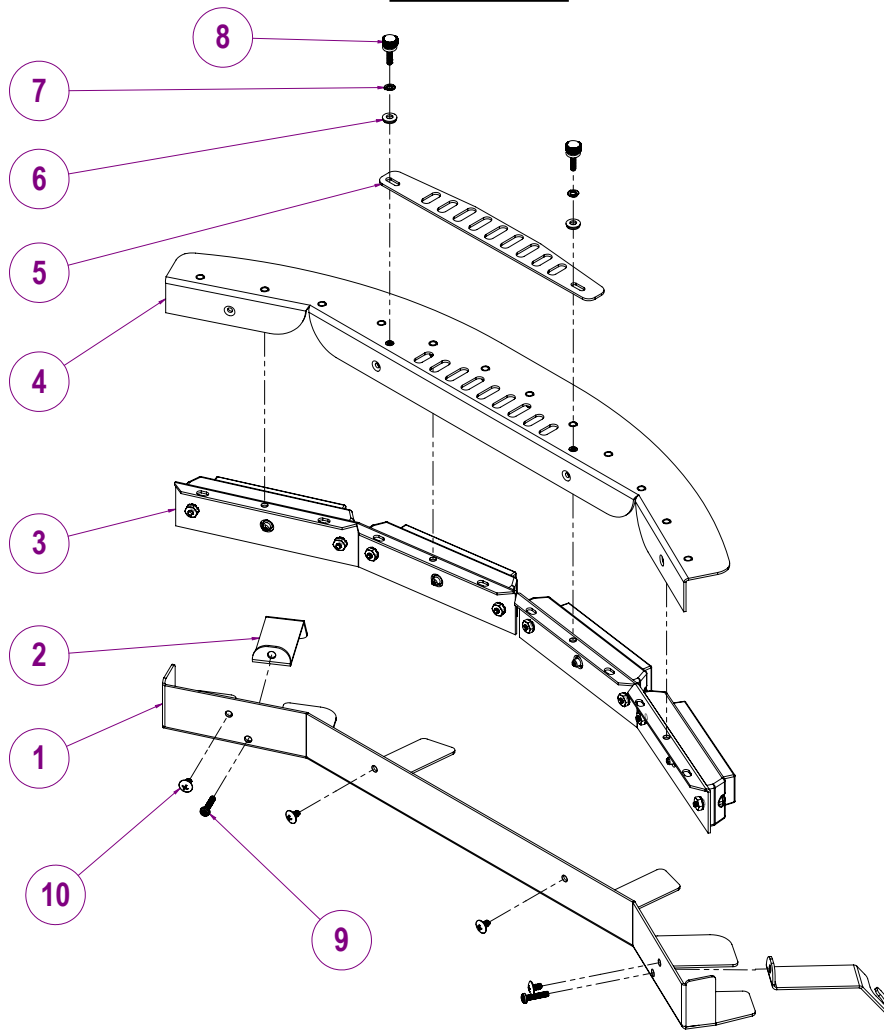
Flash Patterns - Single Color: XT3

PA1- Five Flash P1	PA7- Single Flash P1
PA2- Five Flash P2	PA8- Single Flash P2
PA3- Quad Flash P1	PA9- Triple Flash P1
PA4- Quad Flash P2	PA10- Triple Flash P2
PA5- Double Flash P1	PA11- Steady Burn
PA6- Double Flash P2	PA12- OFF

Flash Patterns – Multi-Color: XT4

PA1 - LAMP-1 Single Flash 75 Sim P1	PA14 - LAMP-2 Double Flash 75 Sim P2
PA2 - LAMP-1 Single Flash 75 Sim P2	PA15 - Dual-Lamp ALT Double Flash 75 Sim P1
PA3 - LAMP-2 Single Flash 75 Sim P1	PA16 - Dual-Lamp ALT Double Flash 75 Sim P2
PA4 - LAMP-2 Single Flash 75 Sim P2	PA17 - Dual-Lamp ALT Quad Flash 75 Sim P1
PA5 - LAMP-1 CA T13 75FPM Single Flash Sim P1	PA18 - Dual-Lamp ALT Quad Flash 75 Sim P2
PA6 - LAMP-1 CA T13 75FPM Single Flash Sim P2	PA19 - LAMP-1 ECE R65 120FPM Single Flash Sim P1
PA7 - LAMP-2 CA T13 75FPM Single Flash Sim P1	PA20 - LAMP-1 ECE R65 120FPM Single Flash Sim P2
PA8 - LAMP-2 CA T13 75FPM Single Flash Sim P2	PA21 - LAMP-2 ECE R65 120FPM Single Flash Sim P1
PA9 - Dual-Lamp ALT Single Flash 75 Sim P1	PA22 - LAMP-2 ECE R65 120FPM Single Flash Sim P2
PA10 - Dual-Lamp ALT Single Flash 75 Sim P2	PA23 - Dual-Lamp ALT ECE R65 120FPM Single Flash Sim P1
PA11 - LAMP-1 Double Flash 75 Sim P1	PA24 - Dual-Lamp ALT ECE R65 120FPM Single Flash Sim P2
PA12 - LAMP-1 Double Flash 75 Sim P2	PA25 - OFF
PA13 - LAMP-2 Double Flash 75 Sim P1	

Parts List



<u>Reference Number</u>	<u>Part Description</u>	<u>Part Number</u>	<u>Quantity</u>
1	Lower Panel	T57721	1
2	Mounting Bracket	T57722	2
3A	XT4 LED Light Head	Contact Code 3, Inc for P/N	Up To 4
3B	XT3 LED Light Head - NOT SHOWN	Contact Code 3, Inc for P/N	Up To 6
4	Outer Panel	T57720	1
5	Vent Plate	T56185	1
6	Washer-#8 - .375 OD-18-8 SS W Bonded Neoprene Backing	T16321	2
7	#6 Wash Split Lock 18-8SS	T15117	2
8	Shoulder Knob-#6-32 X .500-18-8 SS	T17213	2
9	#6-32 X 5/8" Phillips Pan Head Machine Screw Stainless Black Zink	T13938	2
10	#6-32 X 1/4" Phillips Truss Head A Point Sheet Metal Screw Black Oxide	T89905	4

NOTES:

NOTES:

Manufacturer Limited Warranty Policy:

Manufacturer warrants that on the date of purchase this product will conform to Manufacturer's specifications for this product (which are available from the Manufacturer upon request). This Limited Warranty extends for Sixty (60) months from the date of purchase.

DAMAGE TO PARTS OR PRODUCTS RESULTING FROM TAMPERING, ACCIDENT, ABUSE, MISUSE, NEGLIGENCE, UNAPPROVED MODIFICATIONS, FIRE OR OTHER HAZARD; IMPROPER INSTALLATION OR OPERATION; OR NOT BEING MAINTAINED IN ACCORDANCE WITH THE MAINTENANCE PROCEDURES SET FORTH IN MANUFACTURER'S INSTALLATION AND OPERATING INSTRUCTIONS VOIDS THIS LIMITED WARRANTY.

Exclusion of Other Warranties:

MANUFACTURER MAKES NO OTHER WARRANTIES, EXPRESS OR IMPLIED. THE IMPLIED WARRANTIES FOR MERCHANTABILITY, QUALITY OR FITNESS FOR A PARTICULAR PURPOSE, OR ARISING FROM A COURSE OF DEALING, USAGE OR TRADE PRACTICE ARE HEREBY EXCLUDED AND SHALL NOT APPLY TO THE PRODUCT AND ARE HEREBY DISCLAIMED, EXCEPT TO THE EXTENT PROHIBITED BY APPLICABLE LAW. ORAL STATEMENTS OR REPRESENTATIONS ABOUT THE PRODUCT DO NOT CONSTITUTE WARRANTIES.

Remedies and Limitation of Liability:

MANUFACTURER'S SOLE LIABILITY AND BUYER'S EXCLUSIVE REMEDY IN CONTRACT, TORT (INCLUDING NEGLIGENCE), OR UNDER ANY OTHER THEORY AGAINST MANUFACTURER REGARDING THE PRODUCT AND ITS USE SHALL BE, AT MANUFACTURER'S DISCRETION, THE REPLACEMENT OR REPAIR OF THE PRODUCT, OR THE REFUND OF THE PURCHASE PRICE PAID BY BUYER FOR NON-CONFORMING PRODUCT. IN NO EVENT SHALL MANUFACTURER'S LIABILITY ARISING OUT OF THIS LIMITED WARRANTY OR ANY OTHER CLAIM RELATED TO THE MANUFACTURER'S PRODUCTS EXCEED THE AMOUNT PAID FOR THE PRODUCT BY BUYER AT THE TIME OF THE ORIGINAL PURCHASE. IN NO EVENT SHALL MANUFACTURER BE LIABLE FOR LOST PROFITS, THE COST OF SUBSTITUTE EQUIPMENT OR LABOR, PROPERTY DAMAGE, OR OTHER SPECIAL, CONSEQUENTIAL, OR INCIDENTAL DAMAGES BASED UPON ANY CLAIM FOR BREACH OF CONTRACT, IMPROPER INSTALLATION, NEGLIGENCE, OR OTHER CLAIM, EVEN IF MANUFACTURER OR A MANUFACTURER'S REPRESENTATIVE HAS BEEN ADVISED OF THE POSSIBILITY OF SUCH DAMAGES. MANUFACTURER SHALL HAVE NO FURTHER OBLIGATION OR LIABILITY WITH RESPECT TO THE PRODUCT OR ITS SALE, OPERATION AND USE, AND MANUFACTURER NEITHER ASSUMES NOR AUTHORIZES THE ASSUMPTION OF ANY OTHER OBLIGATION OR LIABILITY IN CONNECTION WITH SUCH PRODUCT.

This Limited Warranty defines specific legal rights. You may have other legal rights which vary from jurisdiction to jurisdiction. Some jurisdictions do not allow the exclusion or limitation of incidental or consequential damages.



10986 North Warson Road
St. Louis, MO 63114
Customer Service
(314) 426-2700
cs-c3@code3esg.com
www.code3esg.com

A Division of ESG | www.eccogroup.com