

# INSTALLATION & OPERATION MANUAL

## 2015 DODGE CHARGER



*Code 3 LED light heads are sold separately:  
Please call Code 3 customer service for LED configurations and pricing available.*



## 2015 DODGE CHARGER GRILL LED LIGHTS

### Table of Contents:

Page No:	Description:
1.	Preparation for installation
2.	Installation of brackets onto vehicle
3.	Re-fastening the radiator shield, Wiring connections and Installation notes
4.	Warranty Information

### Preparation for Installation:

- Either loosen top, &/or bottom radiator shield or remove front fascia from vehicle.
- Loosening of front top radiator shield will make installation easier from the engine area
- To loosen shield, remove all push-type fasteners from shield by lifting the center button on each fastener and pulling straight up. Retain fasteners for reinstallation.
- Installations can be accomplished by using the opening at the front center portion of the shield for back plate and fastener installations.
- Wiring may require additional access to the grill area.

**IMPORTANT:** *Read all instructions and warnings before installing and using.*  
**INSTALLER:** *This manual must be delivered to the end user of this equipment.*

## Installation of Grill light brackets onto vehicle frame:

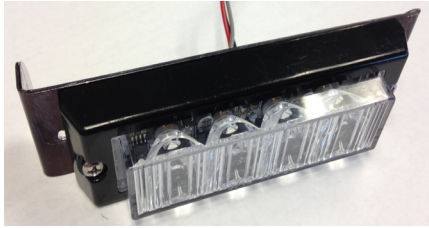


fig 1

The light head should be mounted to the front bracket prior to installing bracket onto grill of vehicle. The bracket will accommodate either an XT4 series or MR6 series light head.

OUTBOARD

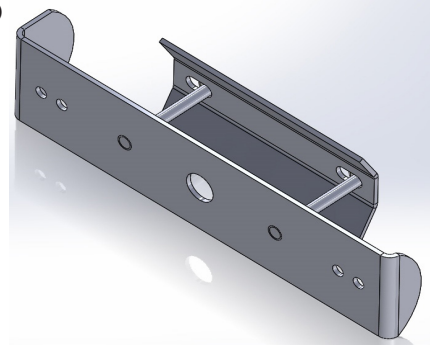


fig 2

INBOARD

Note that the outboard end of the light head bracket is deeper in depth than the inboard end. This is to allow the light head when mounted to face forward.

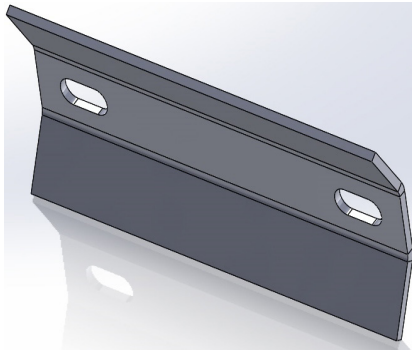


fig 3

The back plate is supplied with two slots for the mounting studs to protrude through. The slots are necessary to adjust the back plate to the contour of the grill when tightened.

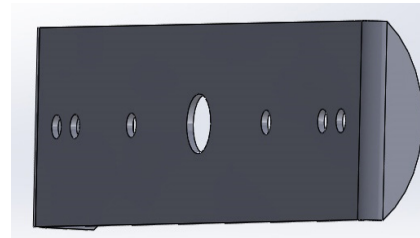


fig 4

CONTOUR FOR GRILL

The front bracket is contoured to fit the concave surfaces of the grill on either side of the center-line located Dodge Badge in the center of the Grill.

A LEVEL SHOULD BE USED VERTICALLY ACCROSS THE FRONT SURFACE OF THE LIGHT HEAD AND ADJUSTING THE LIGHT BRACKET LOCATION SHOULD BE DONE PRIOR TO TIGHTENING THE LOCKING NUTS ON BACK BRACKET.

## Re-installation of vehicle radiator shield:

- The radiator shield push - fasteners should be in the open position and re-inserted into the top holes along both sides of the shield.
- Firm pressure will re-seat the fasteners into position.



## WIRING CONNECTIONS:

1. Connect red wire from lighthouse to + 12VDC
2. Connect black wire to ground.
3. By touching Blue wire momentarily to ground, selection of different flash patterns can be made.
4. Yellow wire can be used for synchronization with other light heads in system.

## Notes:



## WARNING!

Larger wires and tight connections will provide longer service life for components. For high current wires it is highly recommended that terminal blocks or soldered connections be used with shrink tubing to protect the connections. Do not use insulation displacement connectors (e.g. 3M<sup>®</sup> Scotchlock type connectors). Route wiring using grommets and sealant when passing through compartment walls. Minimize the number of splices to reduce voltage drop. High ambient temperatures (e.g. underhood) will significantly reduce the current carrying capacity of wires, fuses, and circuit breakers. Use "SXL" type wire in engine compartment. All wiring should conform to the minimum wire size and other recommendations of the manufacturer and be protected from moving parts and hot surfaces. Looms, grommets, cable ties, and similar installation hardware should be used to anchor and protect all wiring. Fuses or circuit breakers should be located as close to the power takeoff points as possible and properly sized to protect the wiring and devices. Particular attention should be paid to the location and method of making electrical connections and splices to protect these points from corrosion and loss of conductivity. Ground terminations should only be made to substantial chassis components, preferably directly to the vehicle battery. The user should install a fuse sized to approximately 125% of the maximum Amp capacity in the supply line to protect against short circuits. For example, a 30 Amp fuse should carry a maximum of 24 Amps. **DO NOT USE 1/4" DIAMETER GLASS FUSES AS THEY ARE NOT SUITABLE FOR CONTINUOUS DUTY IN SIZES ABOVE 15 AMPS.** Circuit breakers are very sensitive to high temperatures and will "false trip" when mounted in hot environments or operated close to their capacity.

## WARRANTY

Code 3, Inc.'s emergency devices are tested and found to be operational at the time of manufacture. Provided they are installed and operated in accordance with manufacturer's recommendations, Code 3, Inc. guarantees all parts and components except the lamps to a period of 1 year (unless otherwise expressed) from the date of purchase or delivery, whichever is later. Units demonstrated to be defective within the warranty period will be repaired or replaced at the factory service center at no cost.

Use of lamp or other electrical load of a wattage higher than installed or recommended by the factory, or use of inappropriate or inadequate wiring or circuit protection causes this warranty to become void. Failure or destruction of the product resulting from abuse or unusual use and/or accidents is not covered by this warranty. Code 3, Inc. shall in no way be liable for other damages including consequential, indirect or special damages whether loss is due to negligence or breach of warranty.

**CODE 3, INC. MAKES NO OTHER EXPRESS OR IMPLIED WARRANTY INCLUDING, WITHOUT LIMITATION, WARRANTIES OF FITNESS OR MERCHANTABILITY, WITH RESPECT TO THIS PRODUCT.**

## PRODUCT RETURNS

If a product must be returned for repair or replacement\*, please contact our factory to obtain a Return Goods Authorization Number (RGA number) before you ship the product to Code 3, Inc. Write the RGA number clearly on the package near the mailing label. Be sure you use sufficient packing materials to avoid damage to the product being returned while in transit.

\*Code 3, Inc. reserves the right to repair or replace at its discretion. Code 3, Inc. assumes no responsibility or liability for expenses incurred for the removal and /or reinstallation of products requiring service and/or repair.; nor for the packaging, handling, and shipping; nor for the handling of products return to sender after the service has been rendered.

PROBLEMS OR QUESTIONS? CALL OUR TECHNICAL ASSISTANCE HOTLINE (314) 996-2800  
WWW.CODE3PSE.COM



Code 3<sup>®</sup>, Inc.  
10986 N. Warson Road  
St. Louis, Missouri 63114-2029—USA  
Ph. (314) 426-2700 Fax (314) 426-1337

Part No. T56173 Rev. 0 12/2014 ©2005 Code 3, Inc