



2005+ CHEVY IMPALA M180
UNDER MIRROR SIDE LITE BRACKETS

Introduction:

The M180 Under Mirror Side Brackets for the 2005+ Chevy Impala fit under the vehicle's side view mirrors and provide a side warning signal at street intersections.




Contents:

Specifications.....	02
Installation and Mounting.....	02-03
Warranty.....	04

IMPORTANT! Read all instructions before installing and using. Installer: This manual must be delivered to the end user.

 **WARNING!** Failure to install or use this product according to manufacturers recommendations may result in property damage, serious injury, and/or death to those you are seeking to protect!

 **Do not install and/or operate this safety product unless you have read and understand the safety information contained in this manual.**

1. Proper installation combined with operator training in the use, care, and maintenance of emergency warning devices are essential to ensure the safety of emergency personnel and the public.
2. Emergency warning devices often require high electrical voltages and/or currents. Exercise caution when working with live electrical connections.
3. This product must be properly grounded. Inadequate grounding and/or shorting of electrical connections can cause high current arcing, which can cause personal injury and/or severe vehicle damage, including fire.
4. Proper placement and installation is vital to the performance of this warning device. Install this product so that output performance of the system is maximized and the controls are placed within convenient reach of the operator so that s/he can operate the system without losing eye contact with the roadway.
5. It is the responsibility of the vehicle operator to ensure daily that all features of this product work correctly. In use, the vehicle operator should ensure the projection of the warning signal is not blocked by vehicle components (i.e., open trunks or compartment doors), people, vehicles or other obstructions.
6. The use of this or any other warning device does not ensure all drivers can or will observe or react to an emergency warning signal. Never take the right-of-way for granted. It is your responsibility to be sure you can proceed safely before entering an intersection, drive against traffic, respond at a high rate of speed, or walk on or around traffic lanes.
7. This equipment is intended for use by authorized personnel only. The user is responsible for understanding and obeying all laws regarding emergency warning devices. Therefore, the user should check all applicable city, state, and federal laws and regulations. The manufacturer assumes no liability for any loss resulting from the use of this warning device.

Specifications:

The M180 Under Mirror Side Brackets for the 2005+ Chevy Impala fit under the vehicle's side view mirrors and provide a warning signal at street intersections. The brackets are each 1.25" Deep X 1.13" High X 4.00" Wide. For M180 light head specifications & operation see the M180 installation manual.

Installation and Mounting:

Step-1. Refer to the Impala Service Manual to remove the side mirrors from the vehicle. Remove the triangular mirror seal & pull back the gray foam seal around the vehicle's mirror control wires (See Figure 1). **Note: The mounting brackets for the M180 on the Impala are not Passenger & Driver Side Specific so the same bracket will fit on both sides. The illustrations going forward show the driver side assembly but the passenger side mounting process is the same.**

Step-2. Locate the Drill templates on page 3 & cut them out. Place the templates on the appropriate mirrors & tape the templates in position on the mirrors as shown in Figure 2. Mark the hole locations by sticking the point of an ice pick or scratch awl into the plastic mirror body at the center point locations on the template. Remove the templates & save them for future installations. Drill (2) 9/64 (.141)" diameter holes through each of the plastic mirror housings at the smaller hole locations for the mounting screws & drill (1) 9/32" (.281)" diameter hole at the larger hole location for the cable hole. Make sure you drill all the way through into the pocket of the mirror housing where the gray foam seal was.

Step-3. Fasten the light head brackets to the vehicle's mirror housings using (2) of the supplied #8 X 1/2" long sheet metal screws (See Figure 3). **Note: Only tighten the screws just enough to pull the bracket up against the plastic mirror housing! Do not over tighten the screws as they could strip out the plastic!**

Step-4. Twist the light head wires as shown in Figure 4 to aid in routing the cable. Feed the Light Head Cable through the hole in the bracket & through the hole in the mirror housing you drilled in step 2 (See Figure 5 on page 3). **Note: The gasket that comes with the light head is not required.** Pull all of the slack out of the cable (See Figure 6 on page 3) & orient the light head up against the mounting flange of the bracket making sure the (3) Puddle LEDs are oriented correctly (See Note at top in Figure 5 on page 3). Thread (2) of the supplied 3.50mm X 0.6 X 6mm long Philips pan head machine screws with (2) #6 split lock washers through the clearance holes in the bracket and into the threaded mounting holes in the back of the light head (See Figure 7 on page 3).



Figure-1



Figure-2

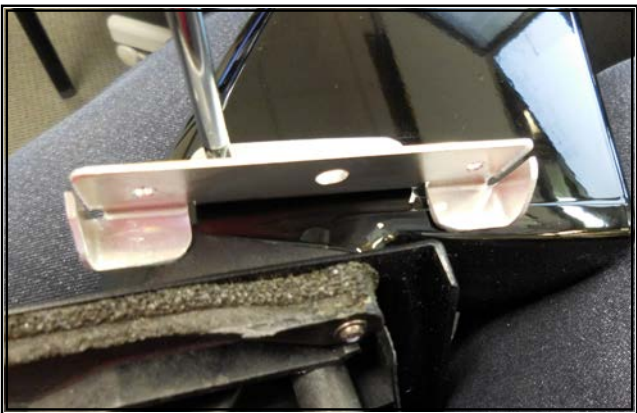


Figure-3



Figure-4

Installation and Mounting: Cont:

Step-5. Route the light head & mirror control wires together. Reposition the vehicle's gray foam wiring seal back into it's original position surrounding both wires & replace the triangular mirror seal. Carefully relocate the mirror back into position in the vehicle & refasten the mirror to the vehicle. Route customer supplied wires to connect to the light head wires, & connect to the desired vehicle power source.

NOTE 3 PUDDLE LEDs



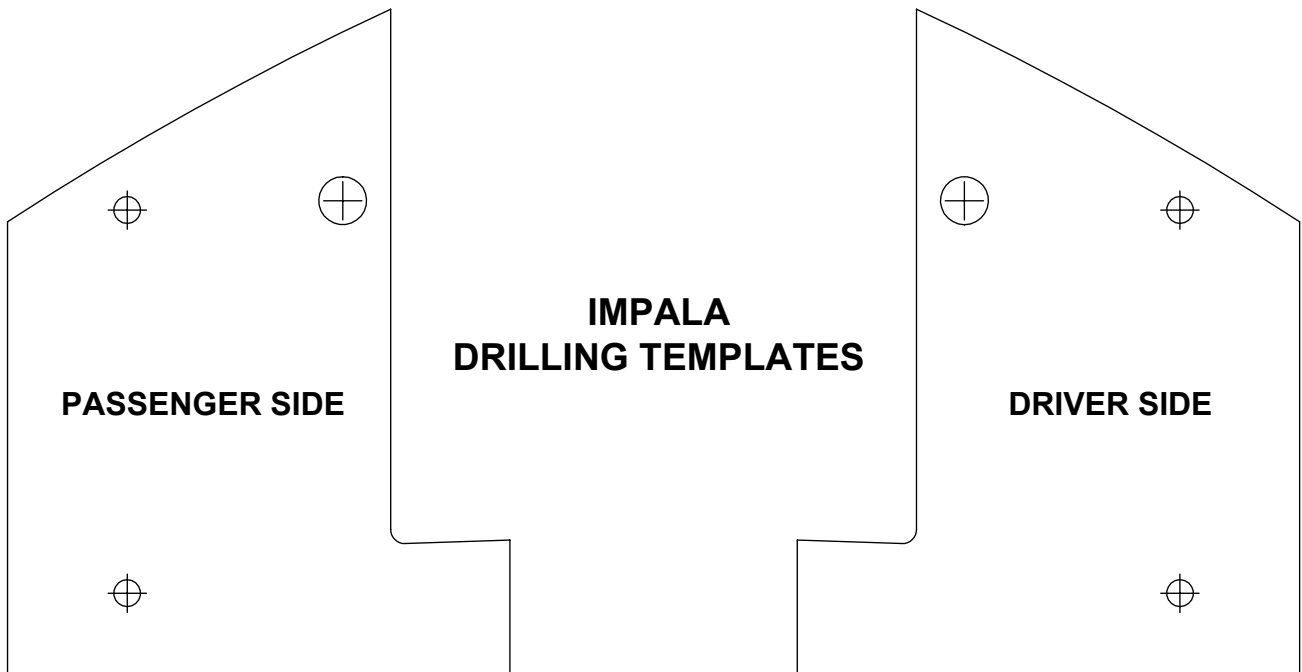
Figure-5



Figure-6



Figure-7



Manufacturer Limited Warranty Policy:

Manufacturer warrants that on the date of purchase this product will conform to Manufacturer's specifications for this product (which are available from the Manufacturer upon request). This Limited Warranty extends for Sixty (60) months from the date of purchase.

DAMAGE TO PARTS OR PRODUCTS RESULTING FROM TAMPERING, ACCIDENT, ABUSE, MISUSE, NEGLIGENCE, UNAPPROVED MODIFICATIONS, FIRE OR OTHER HAZARD; IMPROPER INSTALLATION OR OPERATION; OR NOT BEING MAINTAINED IN ACCORDANCE WITH THE MAINTENANCE PROCEDURES SET FORTH IN MANUFACTURER'S INSTALLATION AND OPERATING INSTRUCTIONS VOIDS THIS LIMITED WARRANTY.

Exclusion of Other Warranties:

MANUFACTURER MAKES NO OTHER WARRANTIES, EXPRESS OR IMPLIED. THE IMPLIED WARRANTIES FOR MERCHANTABILITY, QUALITY OR FITNESS FOR A PARTICULAR PURPOSE, OR ARISING FROM A COURSE OF DEALING, USAGE OR TRADE PRACTICE ARE HEREBY EXCLUDED AND SHALL NOT APPLY TO THE PRODUCT AND ARE HEREBY DISCLAIMED, EXCEPT TO THE EXTENT PROHIBITED BY APPLICABLE LAW. ORAL STATEMENTS OR REPRESENTATIONS ABOUT THE PRODUCT DO NOT CONSTITUTE WARRANTIES.

Remedies and Limitation of Liability:

MANUFACTURER'S SOLE LIABILITY AND BUYER'S EXCLUSIVE REMEDY IN CONTRACT, TORT (INCLUDING NEGLIGENCE), OR UNDER ANY OTHER THEORY AGAINST MANUFACTURER REGARDING THE PRODUCT AND ITS USE SHALL BE, AT MANUFACTURER'S DISCRETION, THE REPLACEMENT OR REPAIR OF THE PRODUCT, OR THE REFUND OF THE PURCHASE PRICE PAID BY BUYER FOR NON-CONFORMING PRODUCT. IN NO EVENT SHALL MANUFACTURER'S LIABILITY ARISING OUT OF THIS LIMITED WARRANTY OR ANY OTHER CLAIM RELATED TO THE MANUFACTURER'S PRODUCTS EXCEED THE AMOUNT PAID FOR THE PRODUCT BY BUYER AT THE TIME OF THE ORIGINAL PURCHASE. IN NO EVENT SHALL MANUFACTURER BE LIABLE FOR LOST PROFITS, THE COST OF SUBSTITUTE EQUIPMENT OR LABOR, PROPERTY DAMAGE, OR OTHER SPECIAL, CONSEQUENTIAL, OR INCIDENTAL DAMAGES BASED UPON ANY CLAIM FOR BREACH OF CONTRACT, IMPROPER INSTALLATION, NEGLIGENCE, OR OTHER CLAIM, EVEN IF MANUFACTURER OR A MANUFACTURER'S REPRESENTATIVE HAS BEEN ADVISED OF THE POSSIBILITY OF SUCH DAMAGES. MANUFACTURER SHALL HAVE NO FURTHER OBLIGATION OR LIABILITY WITH RESPECT TO THE PRODUCT OR ITS SALE, OPERATION AND USE, AND MANUFACTURER NEITHER ASSUMES NOR AUTHORIZES THE ASSUMPTION OF ANY OTHER OBLIGATION OR LIABILITY IN CONNECTION WITH SUCH PRODUCT.

This Limited Warranty defines specific legal rights. You may have other legal rights which vary from jurisdiction to jurisdiction. Some jurisdictions do not allow the exclusion or limitation of incidental or consequential damages.

Product Returns:

If a product must be returned for repair or replacement*, please contact our factory to obtain a Return Goods Authorization Number (RGA number) before you ship the product to Code 3®, Inc. Write the RGA number clearly on the package near the mailing label. Be sure you use sufficient packing materials to avoid damage to the product being returned while in transit.

*Code 3®, Inc. reserves the right to repair or replace at its discretion. Code 3®, Inc. assumes no responsibility or liability for expenses incurred for the removal and /or reinstallation of products requiring service and/or repair.; nor for the packaging, handling, and shipping; nor for the handling of products returned to sender after the service has been rendered.



10986 North Warson Road
St. Louis, MO 63114

Technical Service:
(314) 996-2800

c3_tech_support@code3esg.com
www.code3esg.com

A Division of ESG | www.eccogroup.com